

First In First Out

FIFO & Advanced FIFO

Standard FIFO

This user has potential access to these 5 compartments



Of these 5 compartments, this asset went in first, so this is the item given to this user



First In First Out (FIFO) is an optional, chargeable facility within TrakaWEB and Traka Touch ensuring that authorised users are automatically issued with the item or that has been in the system for the longest (of the items that this user has access to). This is particularly useful for devices that are re-charged while in the locker compartment or for ensuring that wear and tear is spread evenly across vehicles.

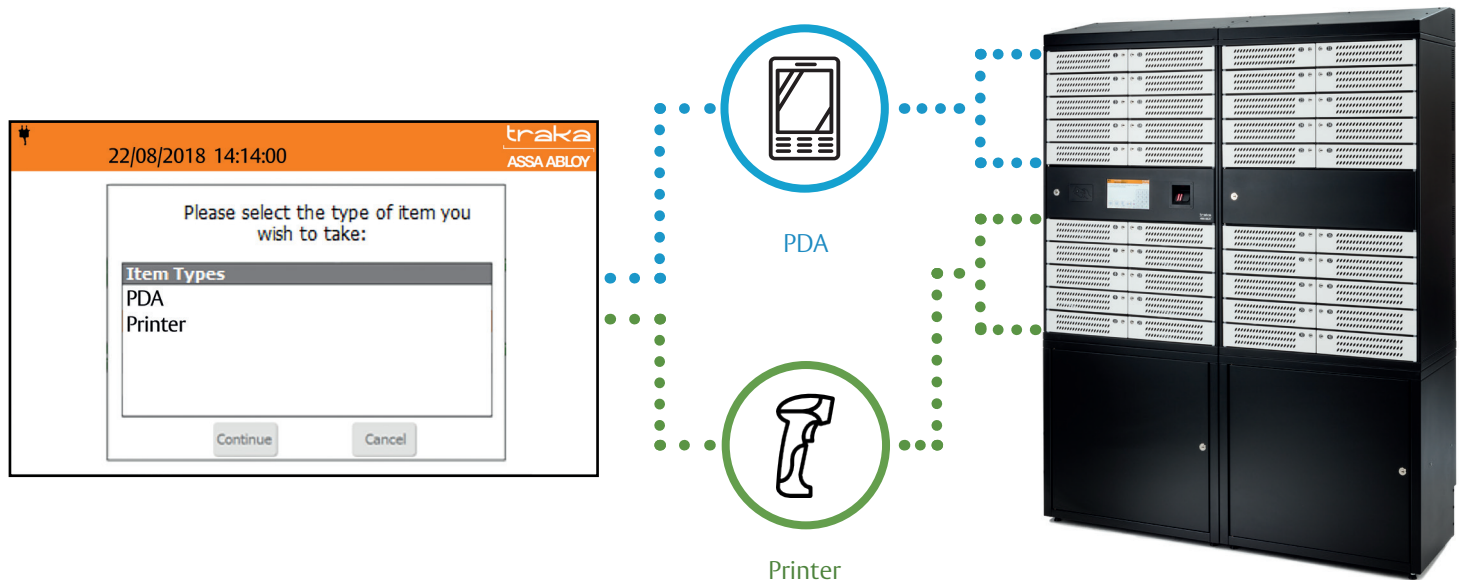
This powerful and versatile facility can help organisations manage their keys and assets more effectively.

FIFO Functionality

- Allocates the item/key which has been in the locker or key cabinet the longest amount of time – the **First** item put **in** is the **First** one to come **out**
- Only allocates items the logged-in user has permission to take
- Admin users can access items as normal
- Available with Touch & Web or Touch Standalone
- Functions with both RFID lockers and key cabinets. One asset per compartment or iFob.

Note: FIFO is popular for items with batteries that need re-charging, but note, the Traka system does not monitor charging cables or battery status. FIFO is based purely on which item has been in the locker system for the longest period of time.

Advanced FIFO



Advanced FIFO (AFIFO) allows users to select one or more types of asset or key that they want to obtain from the system. For each type of asset, the system will automatically issue the asset or key with the longest last access. AFIFO is particularly useful for devices that re-charge while in the locker system containing two or more different types of devices (e.g. printers and scanners, or tablets and PDAs) or for keys to equipment such as vehicles that may be more popular and therefore over used.

Features

- AFIFO allows multiple different types of assets/keys (typically, 2 or 3 different types) to be managed in a single locker or key cabinet system
- Users with the relevant permissions can override the AFIFO allocation and chose a specific compartment to open
- AFIFO uses Common Item Access Groups (CIAGs) as the basis for granting permissions to the different types of assets, rather than granting permissions to individual compartments

Technical Specifications

- Available on Touch Locker systems and key cabinets with TrakaWEB (Lite, Pro or Plus), not available on standalone systems
- Functions with both RFID lockers and iFob asset detection systems. One asset per compartment
- Not compatible with Multi-Authorisers
- Item Allowance per type of device/key (i.e. per CIAG), but NOT an overall allowance for the entire system
- Compatible with Fault Logging
- FIFO & AFIFO are not compatible with Item Booking

The choice: FIFO & AFIFO

- Traka Touch locker and key cabinet systems, both standalone and running with TrakaWEB, have the options of standard FIFO.
- TrakaWEB enabled systems also have the option of AFIFO, with functionality based on 2+ asset types, CIAGs, and some feature compatibility restrictions described above
- An individual system can have Standard FIFO or Advanced FIFO enabled (but not both).
- An instance of TrakaWEB can support some FIFO systems and some AFIFO systems
- Part numbers: GP-2-0221 (FIFO), GP-2-0382 (AFIFO), GP-2-0383 (Upgrade from FIFO to AFIFO)



traka.com

The ASSA ABLOY Group is the global leader in access solutions. Every day we help people feel safe, secure and experience a more open world

FS-TW-FIFO V5